

How To Paint Your Fireplace



For
Spray
Can

Step#1 - Empty your fireplace of any material that will not be part of your new fireglass fireplace.



Step#2 - **DRY-CLEAN** (Nothing Wet) your fireplace with a steel brush. You can either use a hand held steel brush or a drill with a steel brush attachment. Remember **NEVER** use **ANY** liquids to clean your fireplace and use a particle mask.

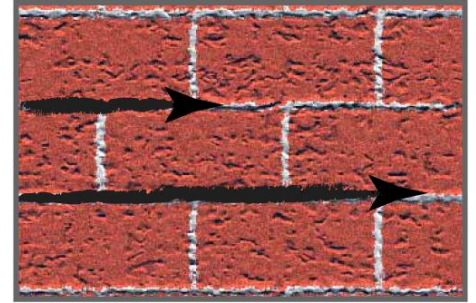


Step#3 - Prepare your fireplace by masking of the surrounding area. From the fireplace hearth cover at least 4' of the floor. Make sure the vent / flu / damper is open.

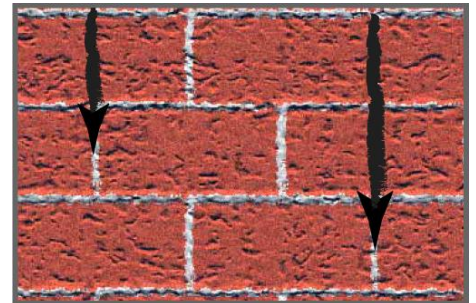


How To Paint Your Fireplace, *Continued...*

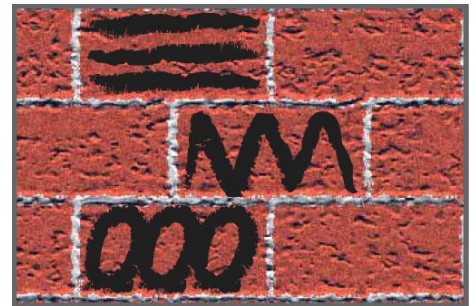
Step#4 - Begin spray painting the brick lines in a horizontal direction.



Step#5 - Follow by spray painting the brick lines in a vertical direction.



Step#6 - Conclude by painting each individual brick / tile. You can use a Left and Right pattern. Or an Up and Down pattern. Or a Swirling pattern. Lastly you may apply a fog coat to even any spotting.



Q: *Should I Worry About Over-Spraying?*

Answer: Yes. Most heat resistant paint is oil based and carries in the air. It is important to surround your furniture and carpet with drop cloths.